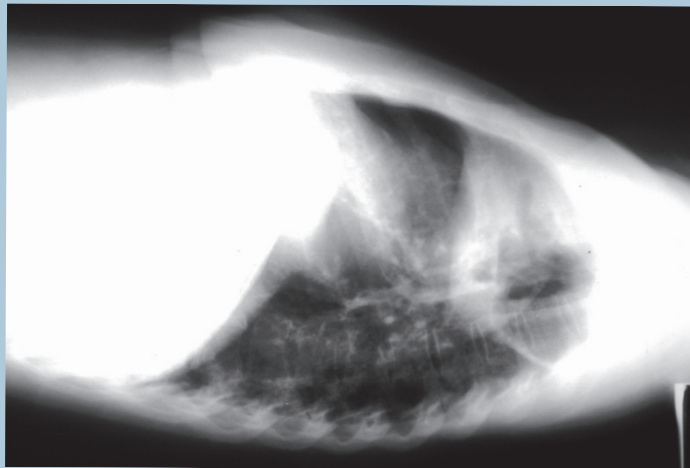


Field/ outreach activities

- Providing Directly Observed TB Therapy
- Educating patients and community groups
- Conducting investigations to identify individuals recently infected with TB
- Assisting patients with social services



Riviera Beach Health Center
7289 Garden Road
Riviera Beach, FL 33404
(561) 804-7900

C.L. Brumback Health Center
38754 State Road 80
Belle Glade, Florida 33430
(561) 996-1600

Delray Beach Health Center
225 South Congress Avenue
Delray Beach, Florida 33445
(561) 274-3100

Tuberculosis
Services and
Information
Monday
through
Friday
8 am to 5 pm
(561)
804-7900

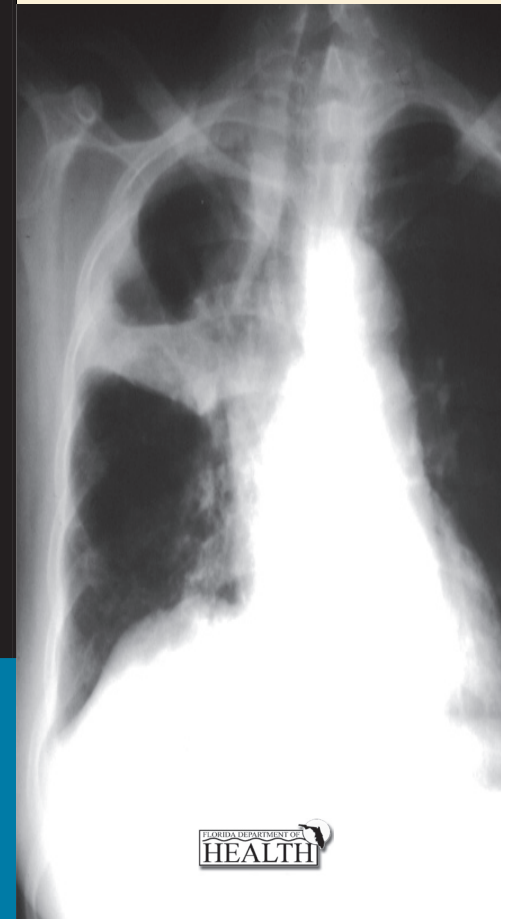
FLORIDA DEPARTMENT OF HEALTH

This public document was produced at a cost of \$311.00 or \$0.62 per copy. The Department of Health & the Palm Beach County Health Department complies with the State & Federal nondiscrimination policies relating to race, sex, age and handicapping condition. In accordance with the ADA, this document may be requested in an alternate format. For more information, please contact the TB Control Program @ (561) 804-7900.

Palm Beach County
Health Department

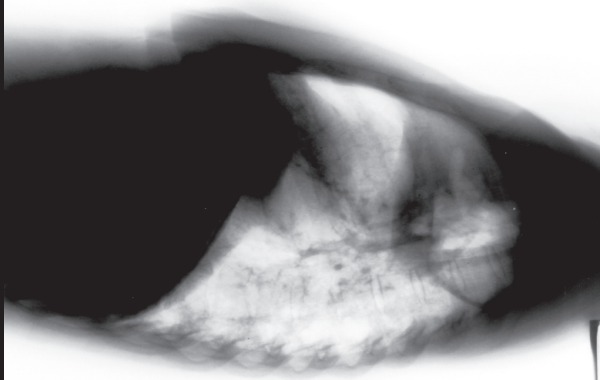
TUBERCULOSIS

CONTROL PROGRAM



TUBERCULOSIS

CONTROL PROGRAM



MISSION

The mission of Palm Beach-Tuberculosis Control Program (TB Program) is to identify, treat and prevent TB in Palm Beach County. The core components of the program are:

- *Identifying and managing persons who have or who are suspected of having TB disease*
- *Treating TB disease to cure*
- *Providing preventive treatment to those most at risk of developing TB disease*
- *Providing training and education*

SERVICES PROVIDED

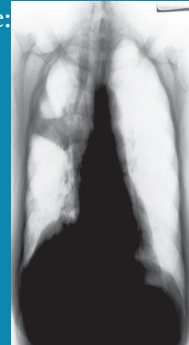
TB Surveillance

• TB Program ensures the prompt, mandatory reporting of each confirmed and suspected case of TB.

• The TB Registry maintains files of all cases of TB.

• Case reporting: Phone:
(561) 804-7922

Fax: (561) 804-7983



Do you have questions about TB?
For more information about TB in English, Spanish or Creole, you can call the Florida TB Hotline: 1-800-4TB-INFO.

Clinical Services

- Each case of active TB in Palm Beach County is assigned to a TB-Public Health Nurse Case Manager who collaborates with the treating health care provider to assure that the patient receives an adequate and appropriate course of treatment.
- Comprehensive TB screening and diagnostic services for suspects/patients with TB disease (including tuberculin skin testing, expert medical consultation, chest radiography, and mycobacteriology)
- Treatment of TB disease
- Preventive treatment for those most at risk of developing TB disease
- Confidential HIV counseling and testing
- Clinical services, including diagnostic evaluation, and medications are provided regardless of the patient's ability to pay.